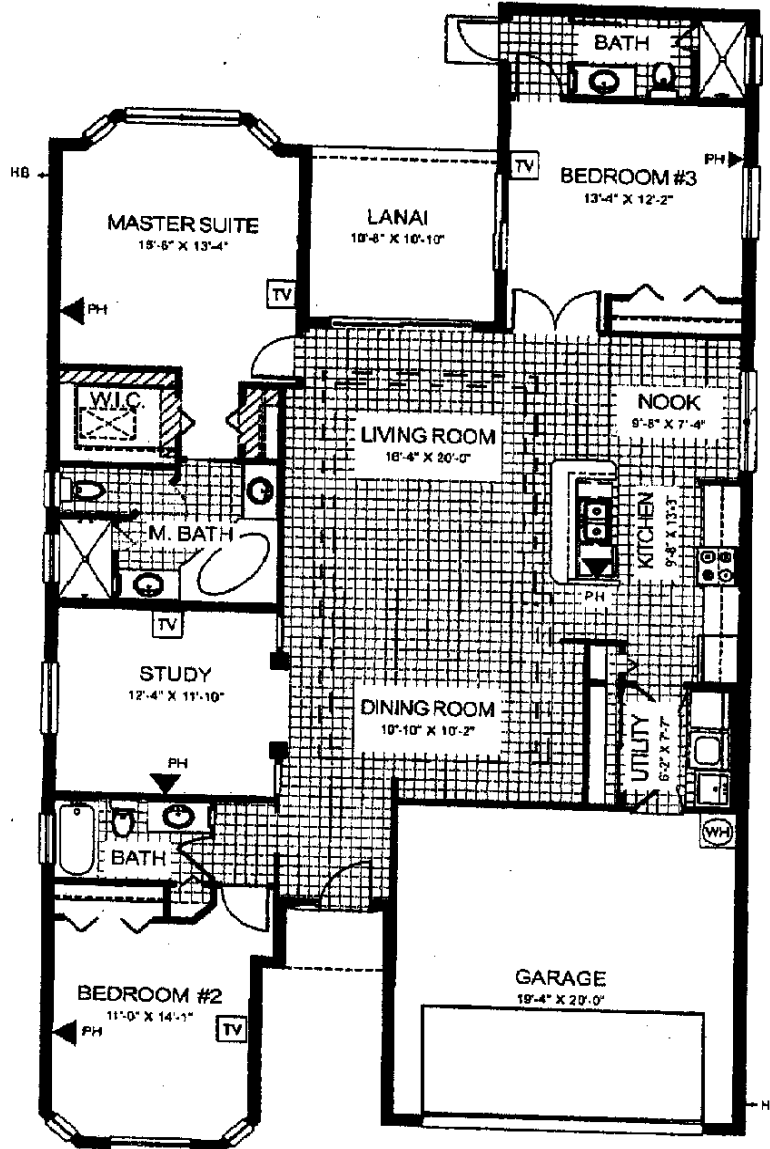




11463 Conch Ct 1151

# Everything's Included® Homes

## Dover Tre V 2042



Stoneybrook at Venice - Manors - 3006 Series  
 Covered Bridge - 3006 Series  
 River Strand 55' - 3006 Series

June 2006

|                                    |                 |
|------------------------------------|-----------------|
| Living Area                        | 2,042 SF        |
| Garage                             | 422 SF          |
| Lanai                              | 115 SF          |
| Entry                              | 22 SF           |
| <b>TOTAL</b>                       | <b>2,601 SF</b> |
| Overall Dimensions 40'-0" x 74'-0" |                 |

The specific features in a home may vary from home to home and from one community to another. We reserve the right to substitute equipment, materials, appliances and brand names with items of equal or higher, in our sole opinion, value. Color and size variations may occur. The prices of our homes, included features, and available locations are subject to change without notice. Please see the actual home purchase agreement for additional information, disclosures, and disclaimers relating to the home and its features. Void where prohibited by law.



Lennar Sarasota/Manatee Division  
 551 N. Cattlemen Road, Suite 200  
 Sarasota, FL 34232  
 www.lennar.com  
 © 2006 Lennar Inc.

